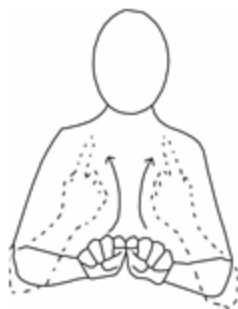




# Going back to school.



Hazelbeck special school



Some things will be different.





On the bus the adults might wear a mask

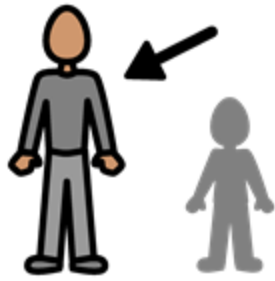




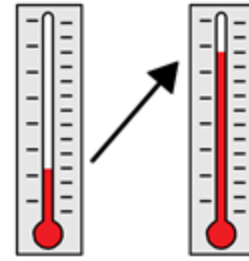
I will arrive in the bus-park.







An adult will take my temperature.





I



need to wash



my



hands lots



hand soap



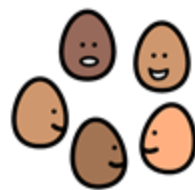
wash hands



I



work



friends



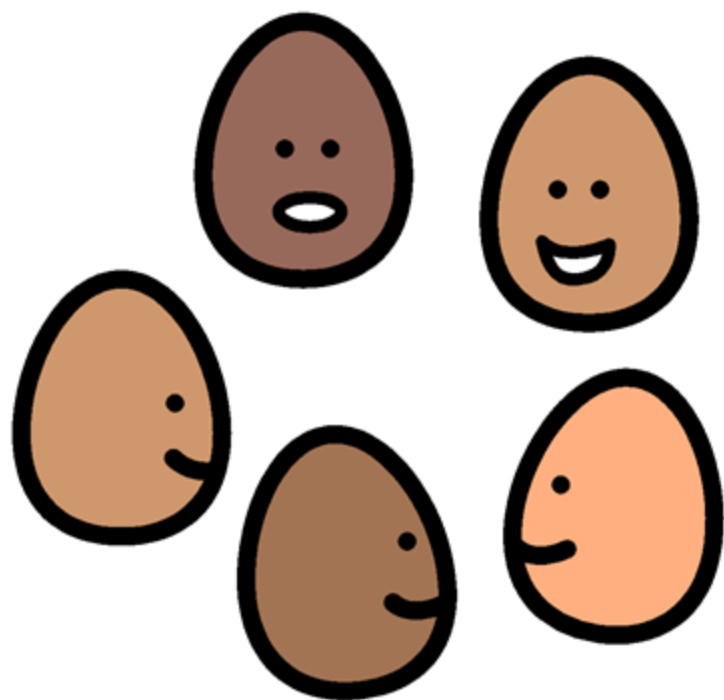
my



class

must only

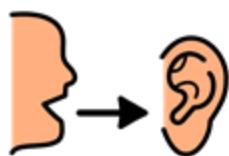
with friends in



friends



I



can

say



hello



to other

people



but no touching.



no touching





I

will



eat



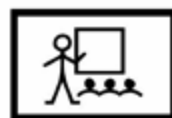
my



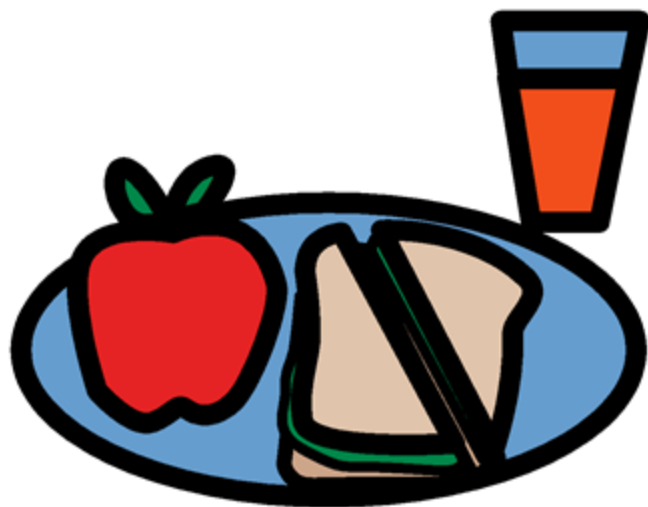
dinner



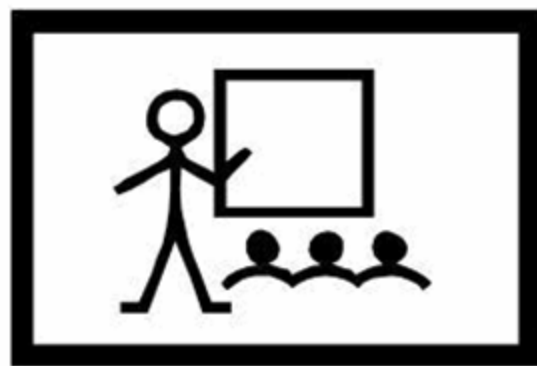
my



classroom.



dinner



classroom



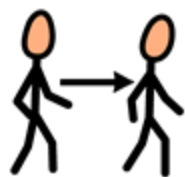
There will be no lunchtime clubs .



club

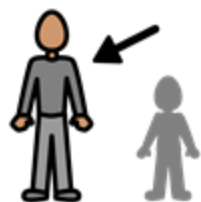


When I am walking I need to

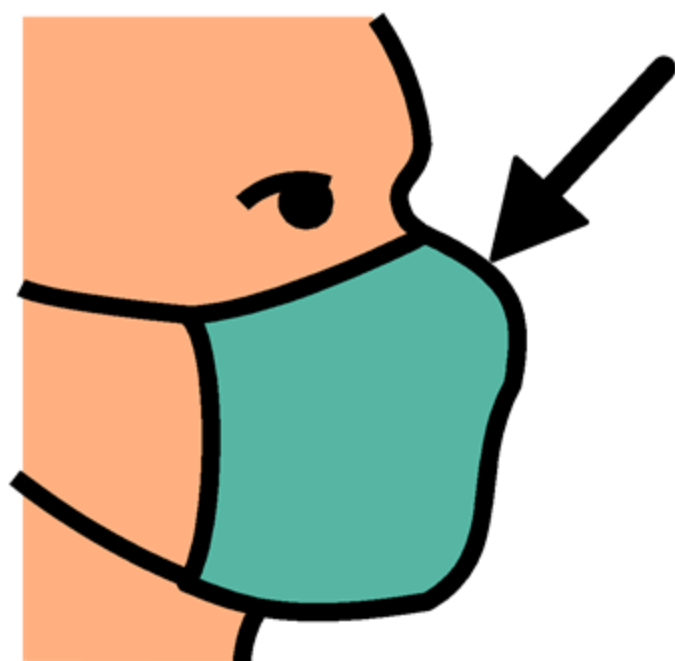


follow the arrows.





If adults are helping me in the toilet they will wear



face mask





These changes will help to keep



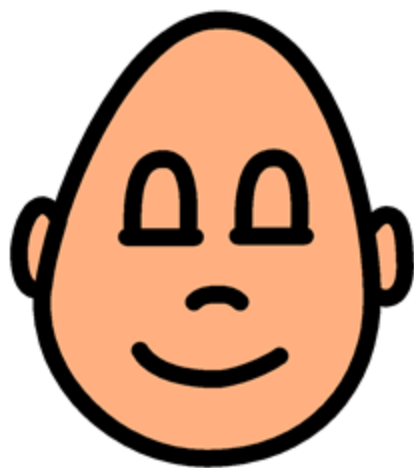
me



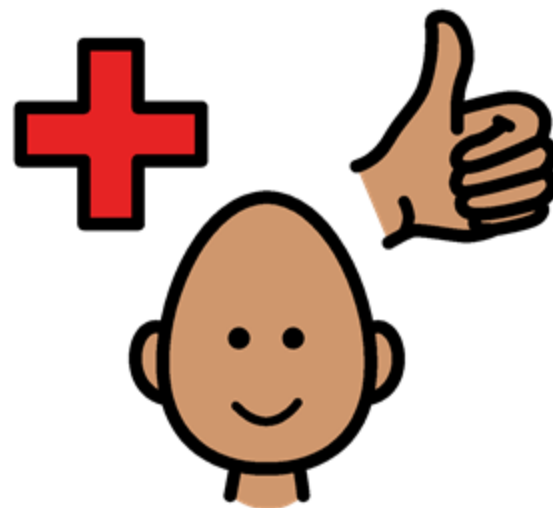
safe



and healthy



safe



healthy





If



I



am worried



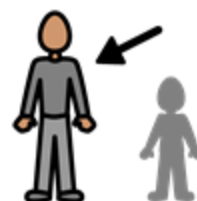
I

can

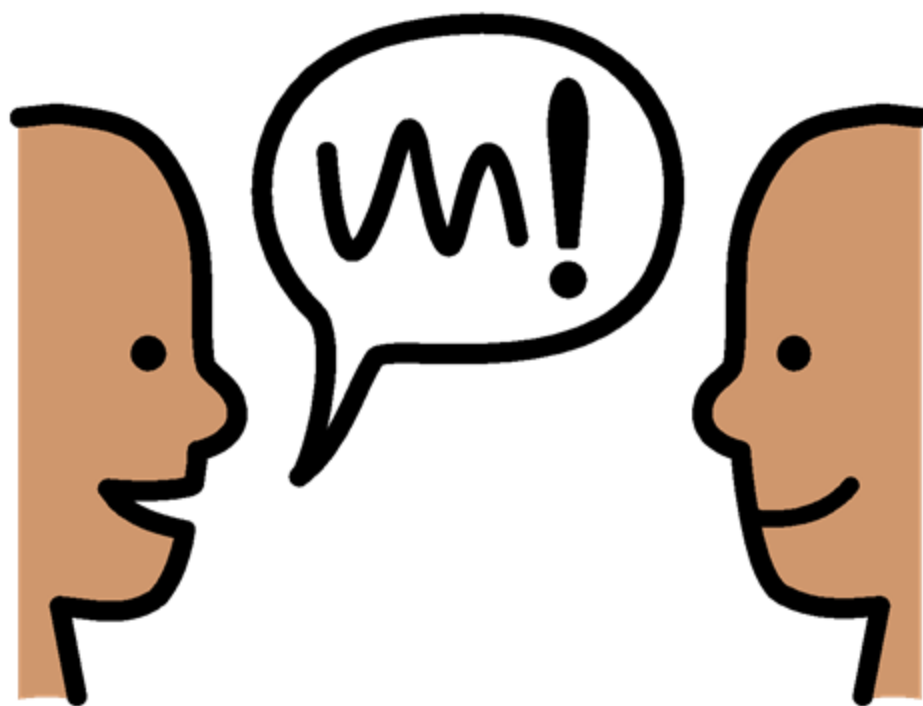


talk

to an



adult .



talk



My



teachers will be



happy



I



am

back

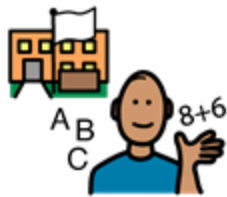
in



school .



My



teachers will



help



me

stay



safe .